



# THE RUTHMAN REPORTER



SPRING 2018



THE SOURCE FOR RUTHMAN COMPANIES EVENTS AND INFORMATION



2018 INTER COMPANY SUMMIT

January 9-10 Radisson Northern Kentucky

- BSM Pumps
- Deming
- FPI Pumps
- Fulflo
- Great Lakes Pump
- Great Southern Pump
- Gusher Pumps
- Gusher California
- Nagle Pumps
- Process Systems
- Ruthman Pumpen
- Wagner Process Equipment

## January Sales Meeting a Success *A Constructive Meeting Starts off the New Year...*

The second annual Ruthman Inter-Company Summit was held in early January. Once again, Dan Csomos moderated a successful agenda of dialog by the group of Ruthman Company managers concerning intercompany workings, suggestions for meeting new challenges and opportunities, introducing new products, employee recruiting in a new era and much more.



Tom Tom G. Ruthman opened the meeting speaking about the state of the Corporation, Corporate Goals, direction, the "soul" or "mojo" of our business, authenticity, creativity, customer connections, commitment to quality, customer perceptions and overall customer satisfaction.

Doug Dorton of Ruthman Pump Repair and Service and Mike Jones of Great Lakes Pump were in attendance along with managers from all the Ruthman manufacturer and distributors





## Meet Ruthman Pump Repair and Service...

Ruthman is pleased to announce the expansion of repair and consultation services, now to be known as...

### **Ruthman Pump Repair and Service.**

Ruthman Pump Repair and Service headquarters is 1212 Streng Street, Cincinnati, OH 45223. Together with our other repair facilities in Mellott IN, Chicago Heights, IL, Warren, MI, and Williamstown KY, they will provide complete rebuild and repair service as well as problem solving consulting services, diagnostic services and system design guidance.

Equipment repair will include repair to virtually any Centrifugal pump, Submersible pump, Axial Flow or Propeller pump, Turbine pumps, Mixers and other rotating process equipment.

**RUTHMAN**  
Pump Repair and Service™

## **RUTHMAN** Pump Repair and Service™

Offering Repair and Service Facilities and Field Service Capabilities for all types of Pumps, Motors, Heat Exchangers, Pump Systems and Accessories.



#### **Expert Services Including:**

- Pump System Analysis and Evaluation
- Diagnostic and Problem Solving
- Pump Failure Analysis
- Laser Alignment
- Vibration Monitoring
- Equipment Rotation
- Aftermarket Services
- Training
- Service Contracts
- Equipment Storage
- Pump Replacement

#### **Expertise with All Brands**

- Gusher • Nagle • Process Systems • Brown & Sharpe
- Goulds VIT • Goulds G & L • Goulds • ANSIMAG • Crown
- Barnes • Flowserve • Yamada • Wilden A.O
- Allis Chalmers • American • Aurora • Byron Jackson
- Cascade • Crane-Deming • Fairbanks • Morse
- Gorman-Rupp • Hazleton • Ingersoll Rand and More.



#### **Midwest Service Centers**

- Warren, Michigan
- Chicago Heights, Illinois
- Mellott, Indiana
- Cincinnati, Ohio
- Williamstown, Kentucky



#### **Contact Us:**

Doug Dorton  
Technical Services  
Manager

513-818-5345  
ddorton@ruthmanservice.com

ASK ABOUT OUR 24 HOUR EMERGENCY SERVICE



The Ruthman Pump Repair and Service Team...

Doug Dorton, Jim Clayton and Rick Yelton



## Special Vertical Put to the Test...

Darrell Jenkins sends photos of the testing of this special 7550 vertical pump at Gusher Dry Ridge. It is a 30 HP pump sized for 1500 GPM @ 55 FT of head. Custom construction was required for the motor to be extended far above the plate to prevent water from coming in contact with the motor if the pit the pump is in was to flood.



After going through the testing process the pump was shipped for use in a New Jersey water park.



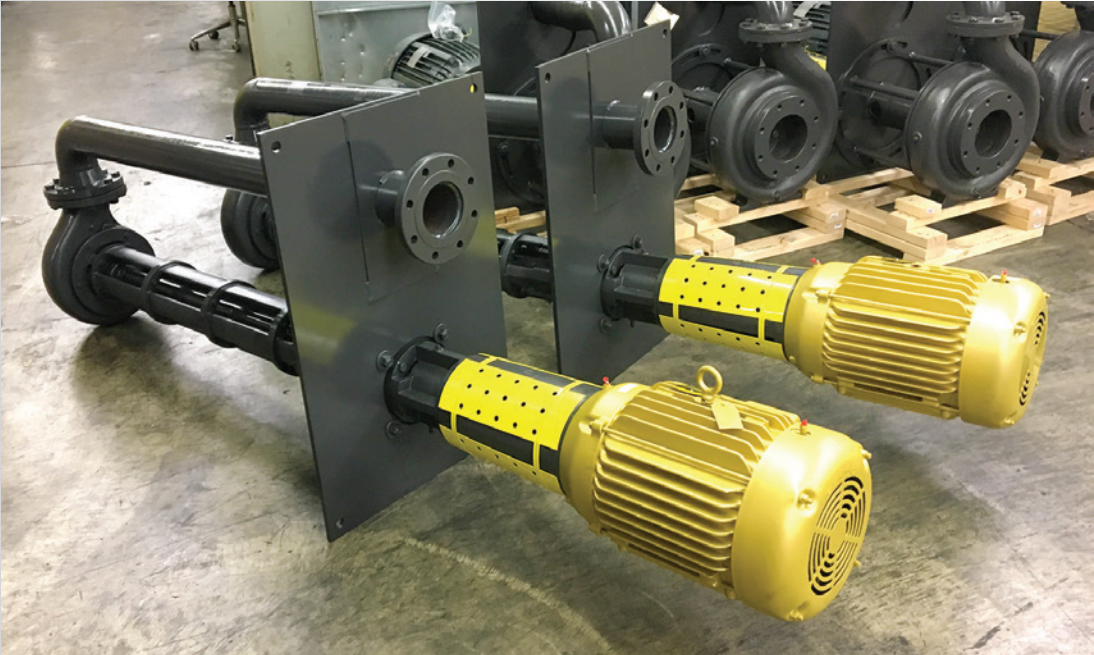


# New Gusher Vertical Choppers...



Putting on the finishing touches on these vertical Chopper Pumps in the Gusher Williamstown spray booth. Sold by Pumps, Parts & Service they will ship to a Goodyear plant in North Carolina.

The pumps are all iron construction, with a 4" discharge pipe and an added 40" extension. They operate at 1750 RPM, 250 GPM AT 60'



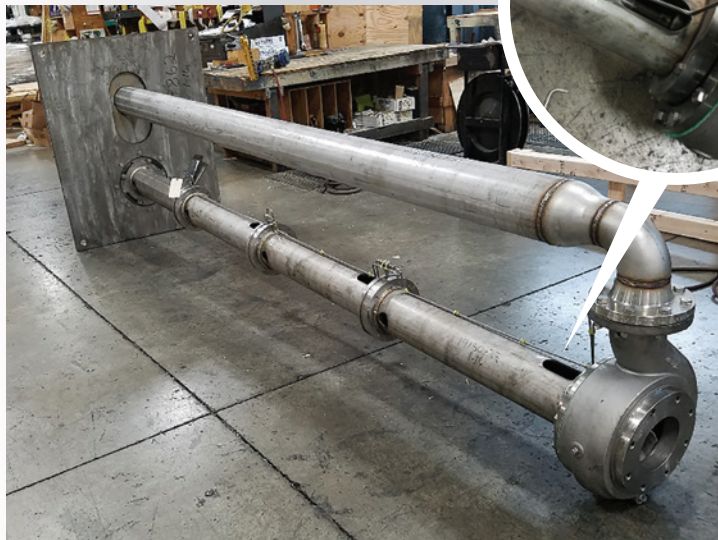


## A Tall Order...

A set of Stainless Steel Process Water Sump Pumps shown here being assembled at Gusher Williamstown for shipment to Mid American Energy power company in Des Moines, Iowa. The pumps were custom constructed, extending to a length of 144" from the discharge plate.



Special flush lines were installed to lubricate the intermediate bushings



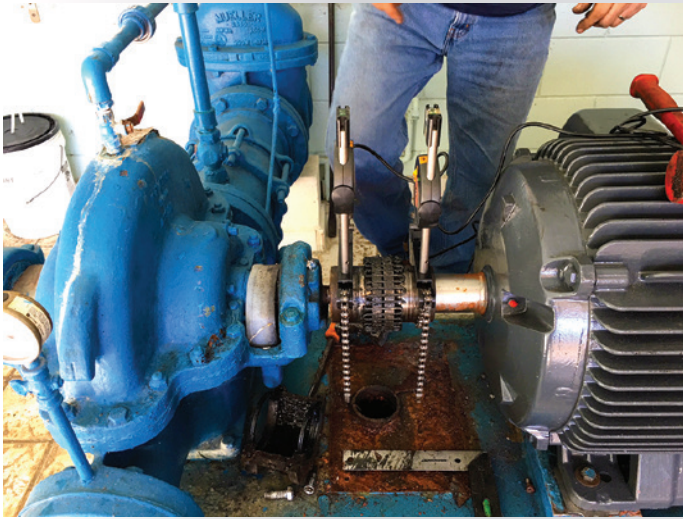


## Muscling a Motor...

Joe Harris and Scott Mezuk installing a premium efficiency Nidec USEM motor for a Deming Split Case Pump at a Florida municipal water treatment plant... The process consisted of coupling motor to the pump, rough aligning, then laser alignment within .003" in the parallel, and perpendicular alignments.



Push comes to shove as Scott and Joe get this 865 pound 60 HP motor under control.



Setting up and calibrating the laser alignment tool on the pump and motor shafts.

Joe prys the motor up so Scott can install shims under the motor feet to help with closing down the misalignment. This will allow them to get it aligned within the industry standards.





## All in a Days Work...

GSP again on the job at a Vertical Turbine Pump remanufacture job at a Florida water treatment plant. They reused the existing customer discharge head and built all new equipment below. This was pump number 2 of a 3 pump project.



The pump was inside a building and because of overhead height restrictions, had to be brought inside in pieces, and assembled onsite as the pump was being lowered section by section into

the sump. This was for potable water so the pump had to be sprayed down with a water/chlorine mixture to disinfect the pump components.





## All in a Days Work...Continued



The discharge head with pipe, shafting, and 18" bowl assembly on the project was supplied by Process Systems and Deming. Along with a general contractor, Joe Harris, Scott Thurrott, Scott Mezuk assisted in, and provided additional installation and startup support and supervision.







## Ruthman People and Events...

### Gusher's Christmas Party

Some highlights from last year's Gusher Christmas party in Williamstown. A parting Gift for Les Smith...a Gusher building model to add to his extensive model train collection.



### Pump Mechanic in Training...

Joe Zach of Great lakes Pump sends in this photo of his 3 year old grandson helping repair a high pressure wash pump...never too young to start!



### Ruthman New and Returning Faces...

#### **Amanda Green**

Very happy to report Amanda Green's return to Gusher inside sales!

*In her words..." I've been with the company 10 years, took a bit of a hiatus but have returned to my humble beginnings!! Truthfully, I really am glad to be back here. Gusher has always felt a little like home to me. I joked about bleeding Gusher Grey while I was gone!!"*

#### **Joe Tenhagen**

Joe returns also as Ruthman's talented Branding and Marketing Consultant. We are already seeing great progress on our company's new look and feel.

#### **Mark Sharpshair**

Mark is a hands-on Information Technology professional with experience in software analysis, design, development, testing, and implementation of data systems. Mark is looking forward to meeting everyone and understanding how technology should be working for the Ruthman Team."



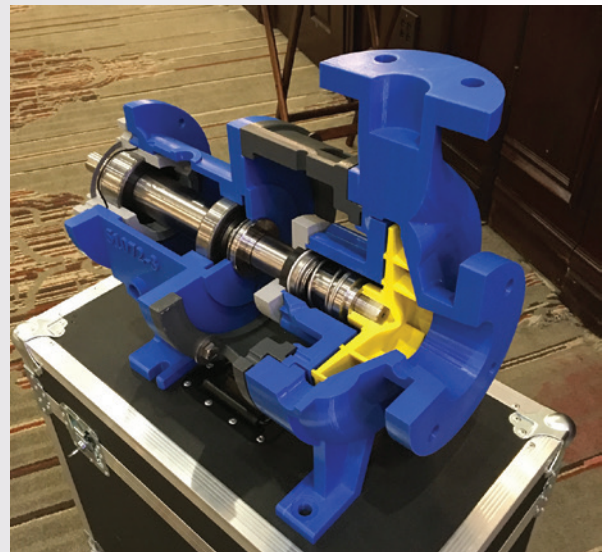
## A 60's Survivor...



In service since 1967, this Gusher model Model 5K2 brought in to Great Lakes for service. The pump just recently started leaking. A pretty impressive (50 year) seal life for this little guy,

## Lightening the Load

A photo of some cutting edge technology here. This actual size Gusher cutaway pump was 3-D printed for use at trade shows. This model looks great and weighs out at a mere 70 pounds with case, compared to the actual pump that would be at 300 pounds.



## Looking for past newsletter issues?....

The newsletter is also available on the Ruthman Companies site <http://www.ruthmancompanies.com/reporter-archives> and mobile websites, along with an archive of past Ruthman Reporter issues. We would love your feedback!

## Please Keep Us Posted....

**Please help us all stay informed. Send us your information about your organization's events, photos, videos products and people for future monthly Ruthman Reporter issues to...**

**[jimdies33@gmail.com](mailto:jimdies33@gmail.com)**