



# THE RUTHMAN COMPANIES

## REPORTER

FEBRUARY/MARCH 2013

THE MONTHLY SOURCE FOR RUTHMAN COMPANIES EVENTS AND INFORMATION

### New Gusher Submersible “Chopperator”

#### *For the Municipal Market..*

Gusher recently designed, built and shipped this 400 GPM, 50 TDH, 25 HP submersible chopper pump. It was sold by Anderson Pump and Process to Veolia Water, a global company providing water and wastewater services for municipal and industrial clients. Veolia also designs the technological solutions and builds the facilities required for these services.

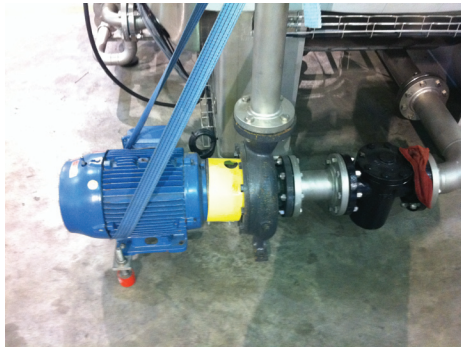


**ANDERSON**  
PUMP & PROCESS  
an A.A. Anderson & Co., Inc.



### More “Muni” Madness *“Swimming Pool Pumps”...*

Also recently sold and shipped are these closed coupled dry pit elbow stand pumps. These Gusher 7550 horizontal models will be mounted vertically and used for pool water systems in municipal water parks.



Jack Kirkwood reports a Gusher close coupled ANSI pump installation at ALLPAX Products. These pumps are being used in sterilization retorts for food processing industry and the application is superheated water.

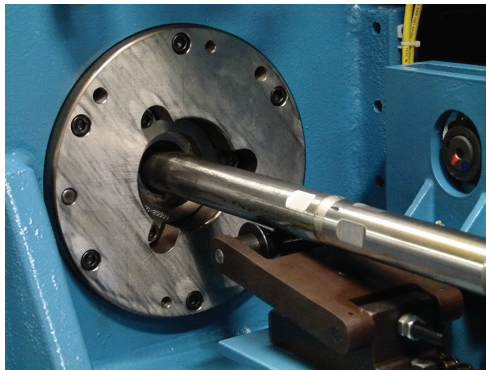
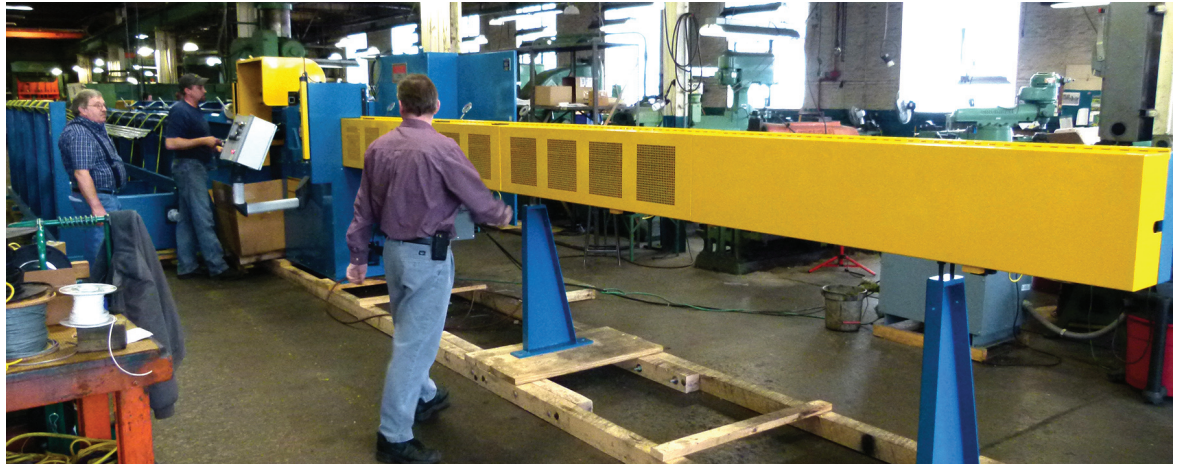


Bill Hein sends these photos of Nagle Submersible pumps with a quick-disconnect assembly being shipped to a Nucor Steel for handling steel scale.





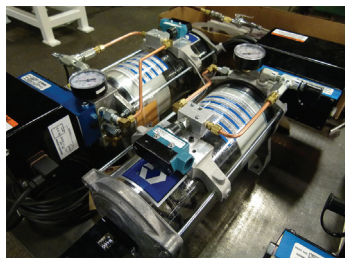
## Final Test Run *2 3/4" Tube Cutter...*



The crew at Vulcan runs this Vulcan/Brehm® tube cutter through the final testing paces before it is shipped to E.R. Wagner Company of Milwaukee. E.R. Wagner makes Engineered Wrapped Components, Custom Tubular Parts, Head Restraint Tubes, Motor & Solenoid Housings, Compression Spacers and Integrated Assemblies

## Hydroform Tube Trimming System

*Helping Ford Build Tough...*



This Vulcan Brehm® custom made system will be used at Ford Plants in the manufacture of aluminum frames for its 2015F-150 model trucks.



## Unified Wine and Grape Symposium

*Wagner makes a good showing...*



Laura Smith sends this photo of the Wagner booth at the 2013 Unified Wine and Grape Symposium. Built with the joint input of growers, vintners and allied industry members, the Unified Wine & Grape Symposium is held annually in Sacramento, California and is the largest event of its kind in the western hemisphere. The show was a great success and the Wagner folks are busy following up on their leads.

## Ruthman Companies Videos

*Check out the new postings on the "ruthmanco" YouTube site, featuring a History Channel video showing Vulcan equipment making Monroe Shocks, as well as new Gusher Chopper Pump, Cantilever and Screw pump short clips.*



ruthmanco posted 1 day ago

See Vulcan / Brehm® tube cutting and die equipment in this History Channel video, manufacturing Monroe Shocks.



**How Monroe Shocks Are Made**

by TennecoInc - 9,065 views

Monroe Shocks - as seen on The Science Channel / Discover - "How It's Made" Would You Know Your Shocks are in Bad Shape:

## Once Again, Please Keep Us Posted....

Please help us all stay informed. Send us your information about your organization's events, photos, videos products and people for future monthly Ruthman Reporter issues to...

*Jim...jdies4000@fuse.net or Karen...ktomlin@gusher.com*