



RUTHMAN

REPORTER DECEMBER 2017

THE SOURCE FOR RUTHMAN EVENTS AND INFORMATION



Ruthman at Weftec '17

Ruthman was well represented at this year's WEFTEC® show in Chicago, the Water Environment Federation's Annual Technical Exhibition and Conference. Left to right in the photo below... Gary Smith of Gusher, Bill Miller of FPI, Scott Larson of Nagle, Scott Smith of Gusher, Dan Csomos of Ruthman, Radu Paveluc of Process Systems / Deming® and Scott Thurrott of Great Southern Pump.



WEFTEC® offers unparalleled access to the field's most cutting-edge technologies, services and water quality professionals from around the world.



Dry Ridge - Delivered!

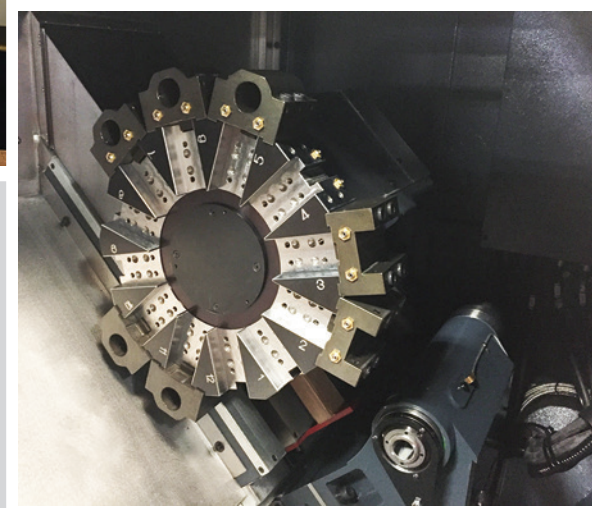
Gusher™ Pumps

New Lathe to Speed Up Impeller Production

The truck rolled right on in at Gusher Williamstown, expediting delivery of the new Johnsford SL-650a Lathe.



The new lathe will increase the speed and accuracy of impeller production.



Kevin McCormick and Mike Mcarter are the operators of the new equipment.



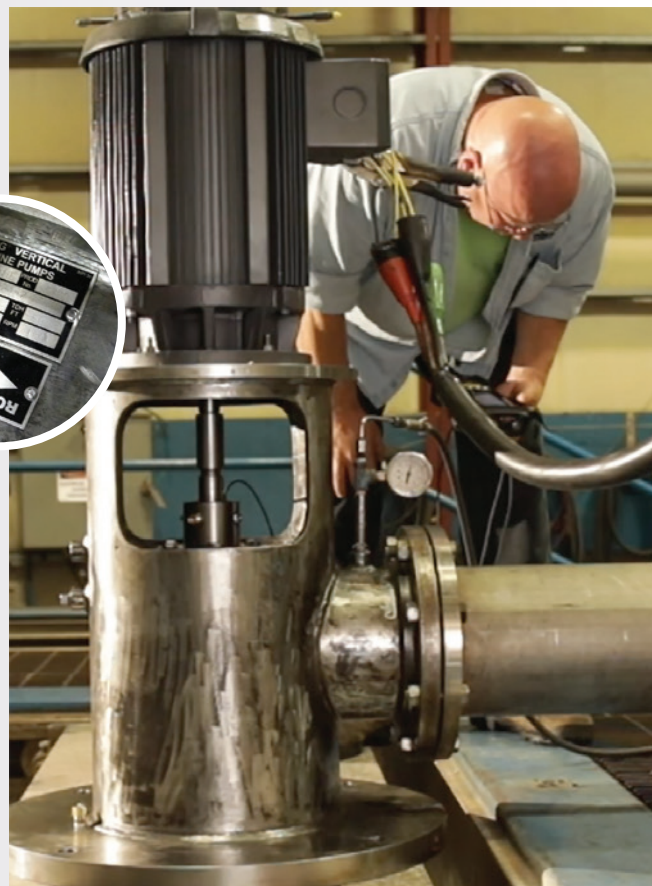
Process Systems™ Deming®
Vertical Turbine Pumps

Gusher™ Pumps

A Journey of 2 Pumps...

Sold, Built, Tested, Delivered

Three Ruthman Brands combine shared resources to provide a pump solution for a South Florida Facility.



Jim Clayton Sets the gauge for testing PSI.

A Day at the Test Tank here at the Gusher Dry Ridge Facility for two Deming® Vertical Turbine Pumps. (15' length, 940 GPM, 1800 RPM / 25 HP, @ 50 TDH) The pumps were sold by Great Southern Pump, manufactured by Process Systems and sent to Gusher for proper testing and will be delivered to a South Florida municipality. They need to perform smoothly reaching 940 GPM at 21 PSI.



Joe "The Tester" takes readings on motor performance. Joe has been with Gusher Since 2011.



Joe created this custom made tool for checking gauge accuracy...AKA "The Hillbilly Guage Equalizer".



Flying Colors...

Performing as expected.

Process Systems™ Deming®

Vertical Turbine Pumps

Gusher™ Pumps



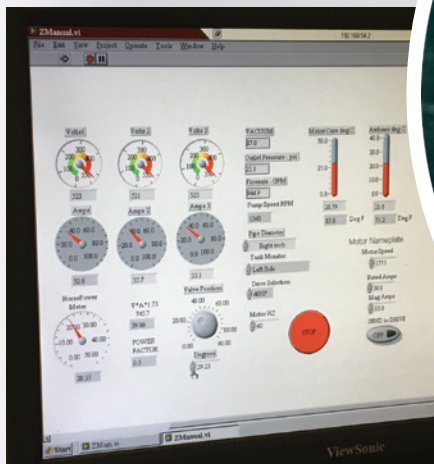
Running smoothly, at the expected at 1800 RPM...25 HP



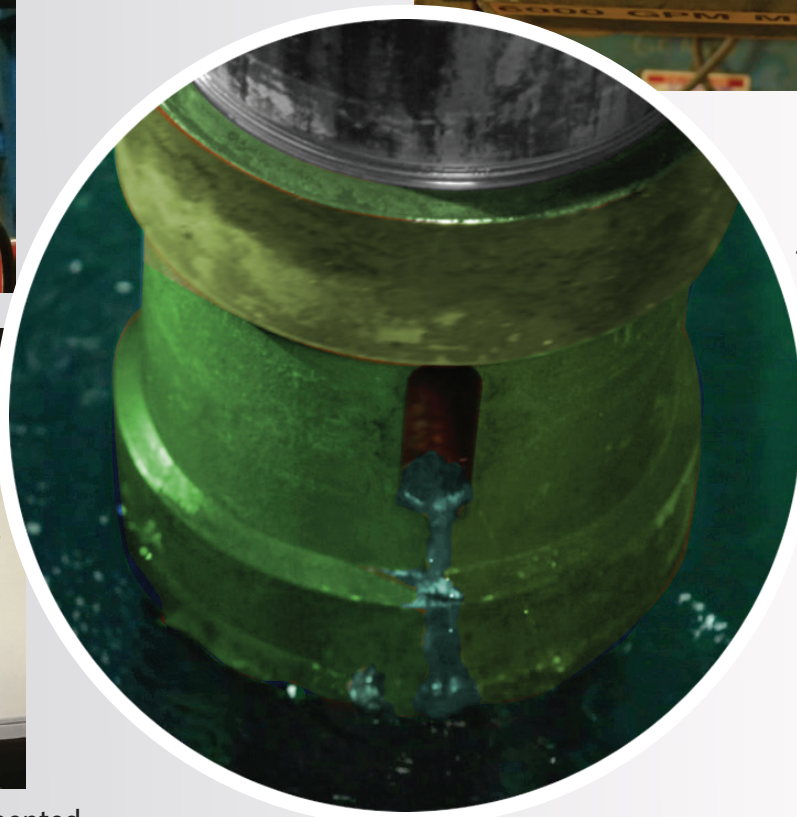
Pumping strong down the line and steady at + 940 GPM



21 PSI at the end of the line



All readings monitored and documented



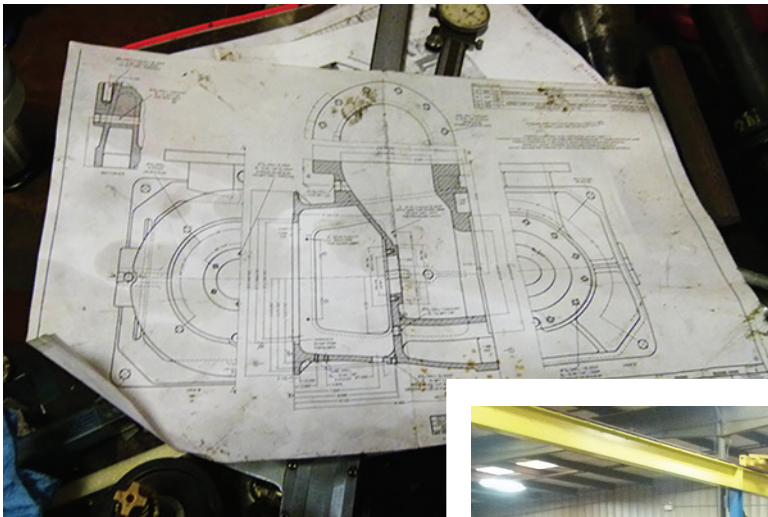
The Deming® Self-Seal design performs as expected through the numerous cycles, displacing any possible leakage without mechanical seals.



More at Dry Ridge

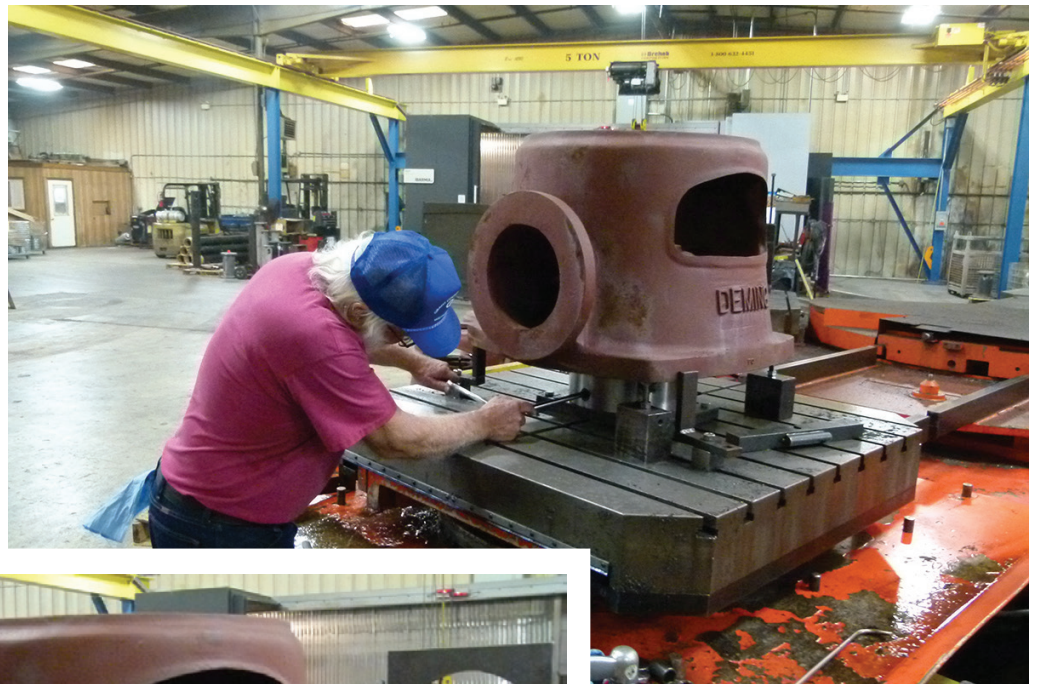
Gusher™ Pumps

Running Deming® Discharge Heads



Process Systems makes use of Gusher's Multi-process Equipment in Dry Ridge to mill some large Deming® discharge heads.

Barry King runs the discharge on this cycle.. then after it is complete he bolts the discharge to another fixture and runs the rest. 2 cycles and complete!





Representing Racing in Indy.



RUTHMAN
Engineering Pump Solutions™

Ruthman Manufacturing Brands have much to offer at the the annual Circle City PRI Racing Show.



The Business of Racing is Done here at PRI, which offers the latest in motorsports technology, ideas and new business opportunities.

Gary Smith and Company, represented Gusher, Deming, Process Systems, FPI, BSM and Fulflo products to the world's top racing professionals and over 1,100 exhibiting companies. Ruthman supplies pumps and crucial equipment for the manufacturing of engine and chassis dynos and other parts for the performance racing industry.



Ruthman's Gary Smith interviewed here by Kathy Fisher of PRI TV. The segment will appear on racing TV channels in the coming months.



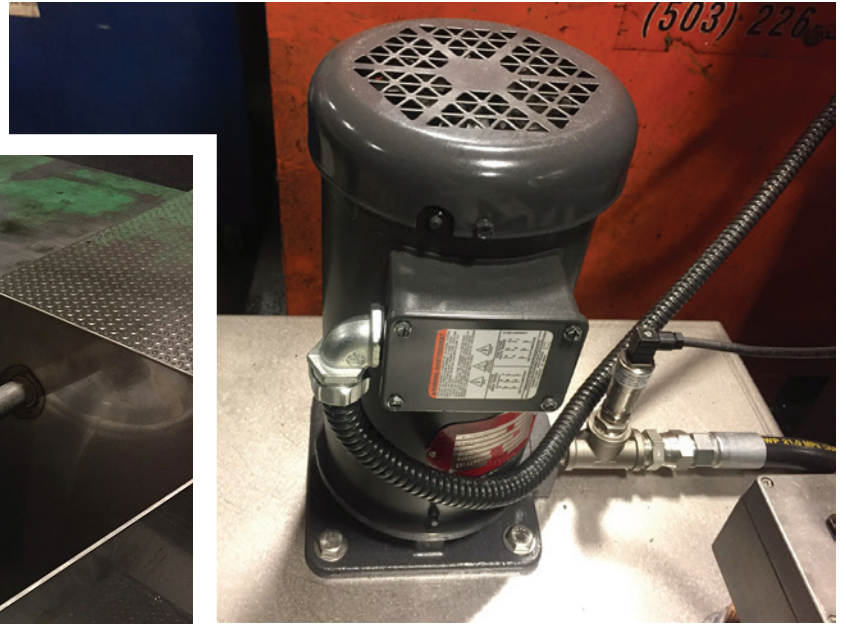
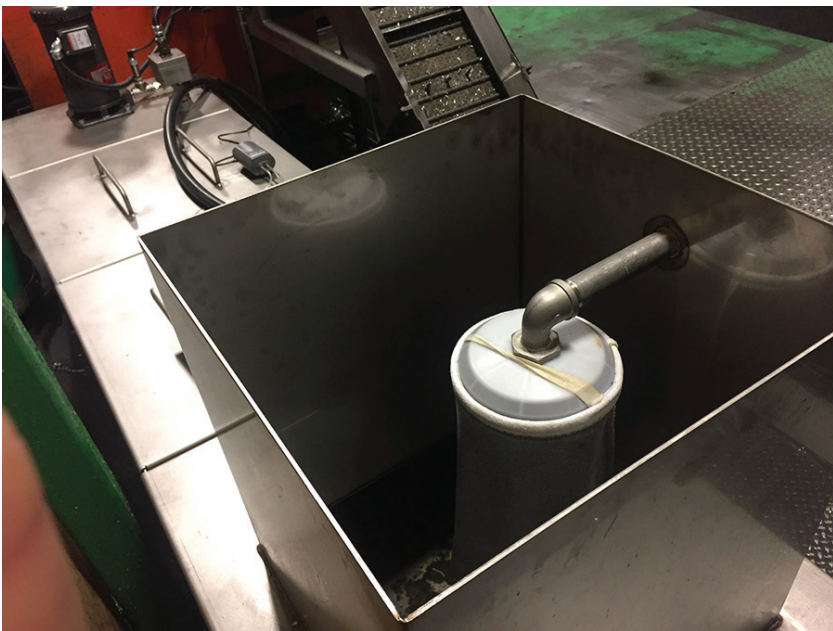


Well Done...

Gusher™ Pumps

This in from a new Gusher distributor in Idaho: R.C. Worst & Company. An exciting job, with the largest stainless steel tank unit Gusher has ever produced, along with a casted MSC4 Series pump. It was great to hear from the Spokane Washington customer who is happy with the new Gusher equipment which is being used for the machining process for aviation parts. The customer emails us...

"The Gusher tank and pump has been in service since 11/28 and I'm pleased to report it has worked well for us. Our machine operator is happy with the amount of flow and pressure this pump provides. It has more than enough power to get the job done".



"We made some modifications to the lid. We cut it into 3 sections and welded on handles to make it easier to access the coolant for maintenance. On the third section we fabricated a box with a lid to house a 50 micron sock filter for the return coolant to pass through. Thanks for your help in making this project a success!"





Sweet Installation

Deming®
Vertical Turbine Pumps

Shown here, a Deming® Vertical Turbine. sold through Scott Thurrott of Great Southern Pump and bought by Deming® distributor in out of Louisiana. The end user is a sugar mill in Southern Louisiana.



Scott Mezuk of Great Southern Pump helping with the the field adjustments for pump start up.



Pump impeller setting completed, oil filled into motor, ready for start up.



Henry Machado

BSM™ Pumps

and the “Little Pump that Could”

Best Wishes To Henry Machado who has been in the pump business for over 44 years and has managed BSM Pumps for 25 years Henry’s wealth of knowledge of pumps is unsurpassed. Now Henry starts a new adventure, called “Retirement”. Henry, You will be missed!



Henry’s favorite story about a BSM pump that ran for 62 years...



Henry Machado, manager, pump sales, presented Henry Parker and Norbert Collins, Green Mountain Power Company, with a new Brown & Sharpe pump to replace the one which had been performing for 62 years.

The Little Pump That Could

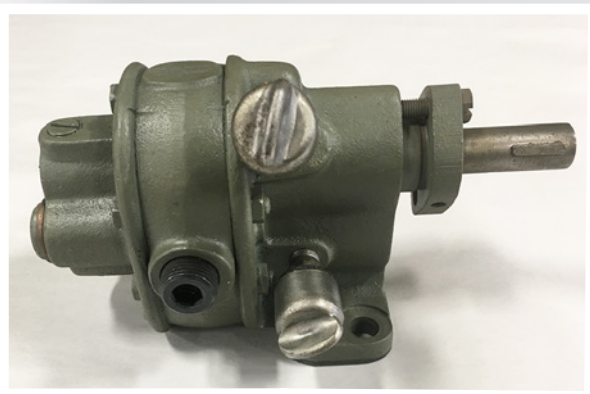
Everybody’s heard about “The Little Engine That Could”, but Henry Machado, manager, pump sales, heard about “The Little Pump That Could”.

Vermont receives 40% of its power from the Green Mountain power station in Stowe. Norbert Collins is the plant attendant who watches after the three giant Westinghouse turbines which toil around the clock. During a routine servicing of one of the turbines, Collins checked each of the four Brown & Sharpe pumps which supply lubrication to the bearing areas. One of the pumps had not been replaced in his 42 years on the job, so he decided to replace it as a preventative maintenance measure. To Collins’ surprise and delight, he found the Brown & Sharpe pump had been installed with the turbine in 1928 and had therefore been pumping merrily away for an unbelievable 62 years!

Machado traveled to the Green Mountain power station through 22 inches of fresh snow to present Henry Parker and Norbert Collins with a new Brown & Sharpe pump. The Little Pump That Could has earned its place in Brown & Sharpe quality history and is enshrined now in Machado’s office. Admirers can only speculate on just how long it would have continued to pump, but Collins is betting 62 years is a record which will be hard to beat.



Henry Machado with the 62-year-old Brown & Sharpe pump.



The “Little Pump that Could” now resides in John Quirk’s office at BSM.

Thanks to John Quirk for the info for this article.



Bill Hein, a Great Career at Nagle

Nagle Pumps

Best of Luck, Bill!

For the past 45 years Bill has been employed by Nagle Pumps, originally as an inside Application Engineer, then Office Manager, then to outside sales. Bill moved up to Sales Manager and after Nagle was purchased by Ruthman, General Manager.

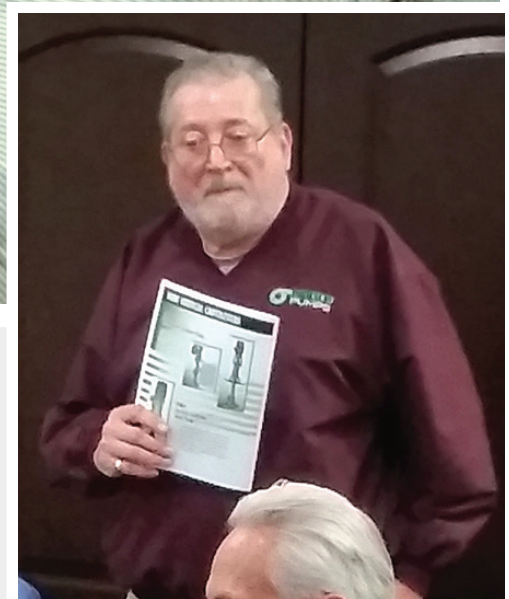
Bill will be officially retiring on Jan 1st, 2018, with plans to work with Nagle as a training instructor with reps and distributors on a part time, as needed basis.

Scott Larsen who has been with Nagle for the past 11 years as Nagle's Engineering Manager will be taking over as General Manager. Scott has a background as a graduate Mechanical Engineer as well as machinist and has been in training in sales over the past year.

Says Bill: *"I have enjoyed the years and experience gained at Nagle and will certainly miss the fellow employees at Nagle along with the Reps, Distributors and Vendors. I wish everyone the best of luck in all future endeavors".*



Bill and the Nagle team at the Chicago Heights Location





All The Best, Les Smith

Gusher™ Pumps

A True Pump Industry Leader and Friend

The Longest Summer Job...

It began for Les in 1957, at the Ruthman Machinery / Gusher Pump factory on Reading Road Cincinnati, where he signed on for a "Summer Job" spraying motor end shields. 60 years later Les calls it "*The longest Summer Job in History*".

In the beginning when the paychecks were small Les considered leaving and working for the phone company. AH Ruthman got wind of this and quickly rectified that along with increasing his responsibilities of course!

In 1963, Ruthman helped Les pay for an education at Cincinnati's OMI trade school, which he attended at night after working days at the shop, finishing up in 7 years.

Les found himself amid the 1960's and early 1970's hotbed of the Cincinnati area "Machine tool Capital of the World" where Coolant Pumps were King. He became instrumental and valuable expediting and scheduling pump production for the large demand at the Ruthman Reading Road and Streng Street manufacturing facilities, working for his father, Pete and Tom R. Ruthman.

Les made his first sales call in 1965 in Springfield, Vermont to Jones and Lamson Machine tool Company, Bryant Grinder and Fellows Gear Shaper Company, who were instrumental in ushering in an era of precision machining and innovation in manufacturing. These qualities began to influence Les: the value of getting to know your customers, their particular methods and needs, learning from them and turning that into a unique ability to better serve each customer on an individual basis. Business and personal relationships with customers became the key for Les as he began working to establish Gusher as the industry "pump of choice". These qualities are apparent throughout Gusher and all the Ruthman companies today.

Les is most proud of helping of Gusher expand beyond coolant into into the large pump format with the 7800 Series Pump for applications in the automobile and other industrial applications, expanding from the Cincinnati to the Gusher Dry Ridge location. Bauer Brothers of Springfield Ohio was one of the first customers for this now well known Gusher Pump Series. The partnership with Great Lakes Pump also boosted demand for the many large models Gusher offers today and ushered in Ruthman's major entry into the automotive market.

Continuing to be Influential, Les will always be part of Ruthman's growth into a global force in the pump industry. As to his retirement future, Les plans to spend time with his lovely wife, Judy, on his farm pursuing his hobbies of boating and model railroading.



Les became Executive Vice President of Ruthman Companies.

From *Ice Weather...*

FPI Pumps



Bill Miller sends these photos, with a little snow from an FPI installation in Nicollet County Minnesota. The job was originally quoted with a 15 week delivery, but after receiving the PO the customer stopped it and said they needed the equipment in 8 weeks so the contractor could finish before winter. FPI agreed and delivered to in time. The pumps are VAF18-16-880 verticals rated for 6,800 GPM @ 10.0' and are driven by a 25hp electric motor with a belt and pulley drive.

To *Nice Weather.*

Deming[®]
Vertical Turbine Pumps

Scott Thurrott sends this photo of Joe Harris of Great Southern Pump setting clearances on these impellers on this Deming[®] installation.



Please Keep Us Posted....

Please help us all stay informed. Send us your information about your organization's events, photos, videos, products and people for future monthly Ruthman Reporter issues to: jimdies33@gmail.com

The newsletter is also available on the Ruthman Companies site <http://www.ruthmancompanies.com/reporter-archives> and mobile websites, along with an archive of past Ruthman Reporter issues. We would love your feedback!